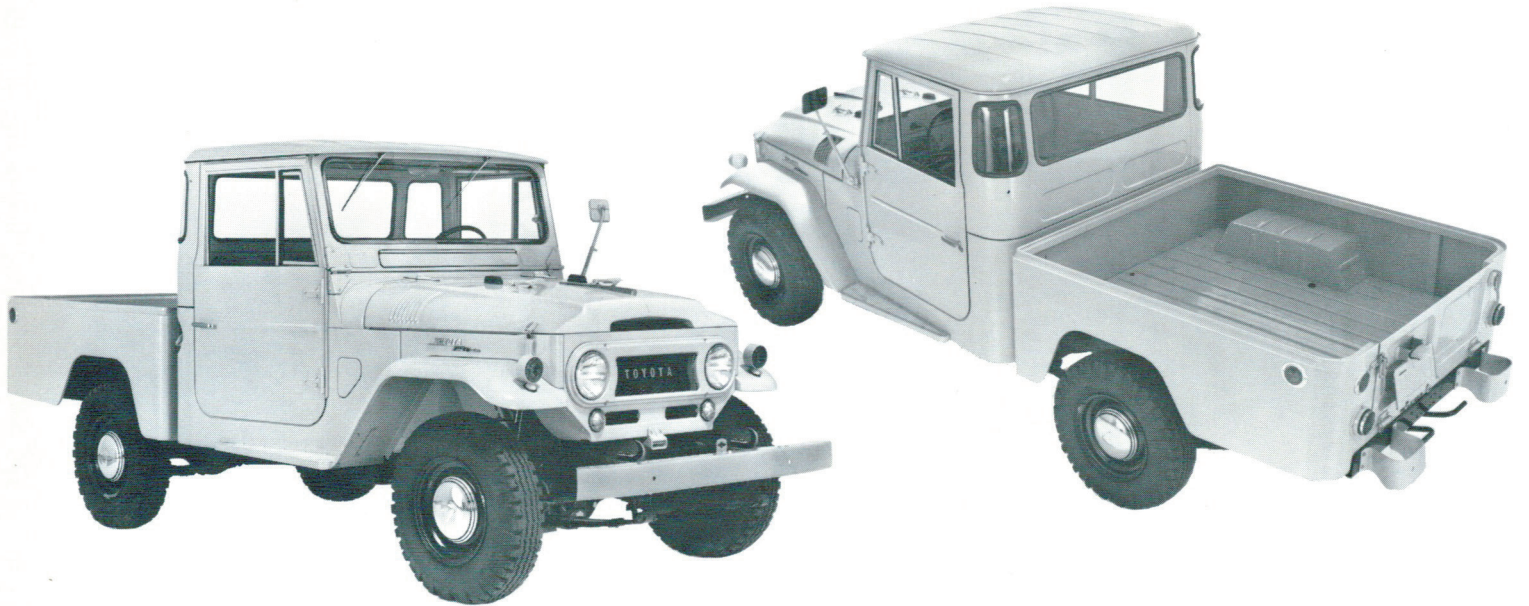


TOYOTA ***LAND CRUISER*** **SHORT WHEELBASE PICKUP**
4-WHEEL DRIVE (DETACHABLE CAB)

FJ45LP
135HP



The toughest, 4-wheel drive pickup trucks ever built are now available in two models: the TOYOTA short wheelbase pickup and the TOYOTA long wheelbase pickup. Both match the world-famous TOYOTA LAND CRUISER power and performance—combined in a workhorse truck and trail vehicle with a removable top! The new removable top feature permits pleasure driving in the open air, and all-round visibility.

Like all Land Cruisers, these tough pickup trucks go anywhere. Both vehicles have the same TOYOTA BIG SIX cylinder, 135 hp studhorse

engine—proved in thousands of rigs across the country and 7 continents. Both have 9 forward, 3 reverse gear combinations—and will climb up 67% grades, plow through sand, mud or snow—yet cruise up to 85 mph! As for loads—both of these pickups are designed and built with a heft that allows many times the weight capacity than the areas will allow—and the flat tailgate allows extending loads beyond the bed. No other pickup carries so much, goes so far, as does this 4-wheel drive TOYOTA with the removable top!

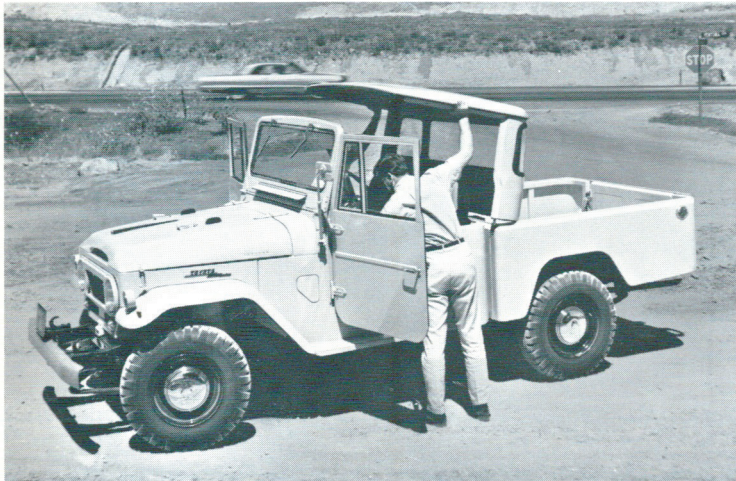
TOYOTA ***LAND CRUISER*** **LONG WHEELBASE PICKUP**
4-WHEEL DRIVE (DETACHABLE CAB)

FJ45LPB
135HP

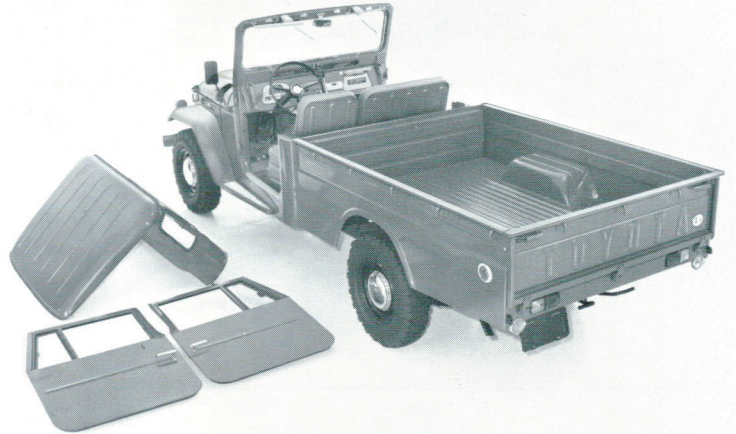




On the weekend, it goes where the fun begins—to remote hunting, fishing and camping spots. Trucking, or trail breaking, TOYOTA'S tank tough construction, power and economy—make it today's No. 1 pickup.



Simple removal of top converts the TOYOTA pickup to a 2-in-1 trail and pleasure vehicle for open air driving, hunting and exploring in faraway places.



Remarkable new feature of both the long and short wheel-base pickup is the detachable cab.



Ride with luxurious comfort in the roomy, weathertight cab. Roll down windows stay up no matter how rough the terrain. Pleated foam rubber seats are wide and have ample room for 3 big men.



On the highway, your TOYOTA LAND CRUISER pickup rolls along in 2-wheel drive—at 85 mph. When the going gets rough, slip into 4-wheel drive and TOYOTA digs in and keeps going.

SPECIFICATIONS

ENGINE

Type 6 cyl. in line OHV
 Bore and Stroke 3.54 x 4.00 inches
 Displacement 237.3 inches
 Compression Ratio 7.5:1
 Maximum Horsepower 135 @ 3800 rpm
 Maximum Torque 217 ft. lb. @ 2000 rpm
 Carburetor Down draft single barrel
 Fuel Tank Capacity 18.5 U. S. gallons
 Cooling System 17.6 quarts
 Crankcase Capacity 6.9 quarts
 Battery 12 volt 50 amp hour
 Alternator 12 volt

CLUTCH

Type Dry single plate with torsion rubbers
 Facing Diameter 10.8 inches
 Facing Area 111 square inches
 Transmission 3 speed; synchromesh 2nd and 3rd
 Transfer 2 speed helical gear sliding type

AXLE

Front Full-floating hypoid
 Rear Semi-floating hypoid
 Ratio 4.11:1

SUSPENSION

Type Leaf spring, hydraulic shock absorbers

STEERING

Type Worm and sector roller
 Gear ratio 21:1
 Turning radius Short WB: 20 ft. Long WB: 21.5 ft.

BRAKES

Hydraulic, 4 wheels

Braking surface 183 square inches

TIRES 7.60 x 15, 4-ply

PERFORMANCE

Maximum speed 85 mph

DIMENSIONS AND WEIGHT

Overall length Short WB: 183.1 inches
 Long WB: 196.3 inches

Overall width Short WB: 65.6 inches
 Long WB: 66.5 inches

Overall height Short WB: 74.4 inches
 Long WB: 76.1 inches

Wheelbase Short WB: 104.3 inches
 Long WB: 116.1 inches

Road clearance 8.3 inches

Headroom: front seat to headliner 37.4 inches

Legroom: front floor to front seat back 43.0 inches

Curb weight Short WB: 3670 lbs.
 Long WB: 3800 lbs.

Tread: front 55.3 inches
 rear 55.1 inches

Load capacity Short WB: ½ ton rating.
 Long WB: 1 ton rating.

Box Dimensions (inside)
 Short WB: 60" wide, 64½" long, 14½" deep.
 Long WB: 62½" wide, 84" long, 15½" deep.



TOYOTA MOTOR DISTRIBUTORS, INC.

Los Angeles, San Francisco, Portland,
 Denver, Newark, Houston, Boston, Chicago

*The Toyota policy of continual improvement in design
 and manufacture requires that specifications, equipment
 and prices be subjected to change without notice*