

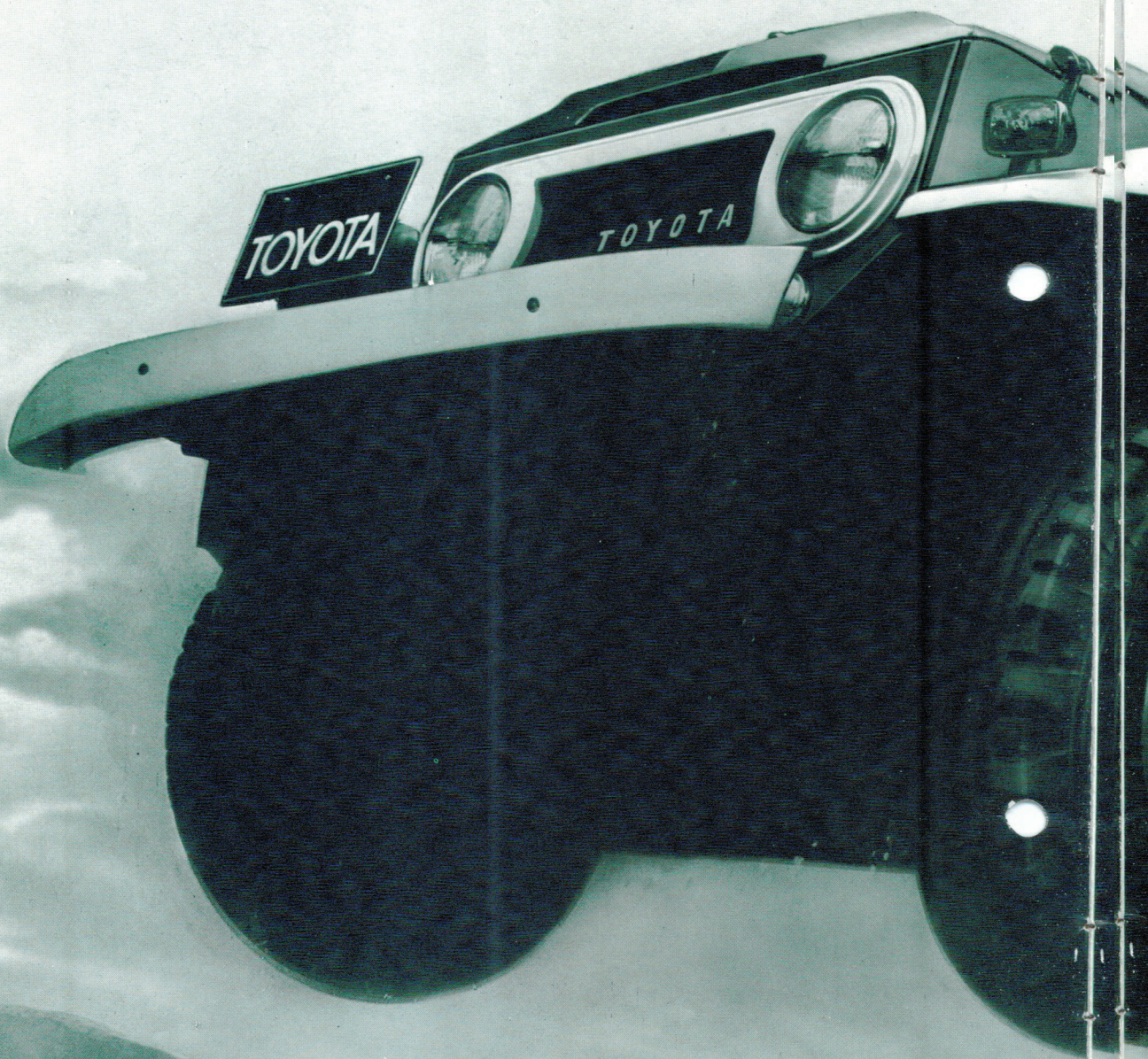


**TOYOTA
LAND
CRUISER**

**Hard Top
Canvas Top, Vinyl Top
Station Wagon
Pickup**

Whether you're big game hunting or exploring, your TOYOTA LAND CRUISER will take you across country like a tank. Its big, husky 145 BHP engine puts out the highest power in its class and with nine forward and three reverse gear combinations, plus four-wheel drive, you can go over any surface or slope ahead of you.

**YOU'VE GOT AN UNS
FOR ANY
TOYOTA LAND CRU**



TOPPABLE VEHICLE

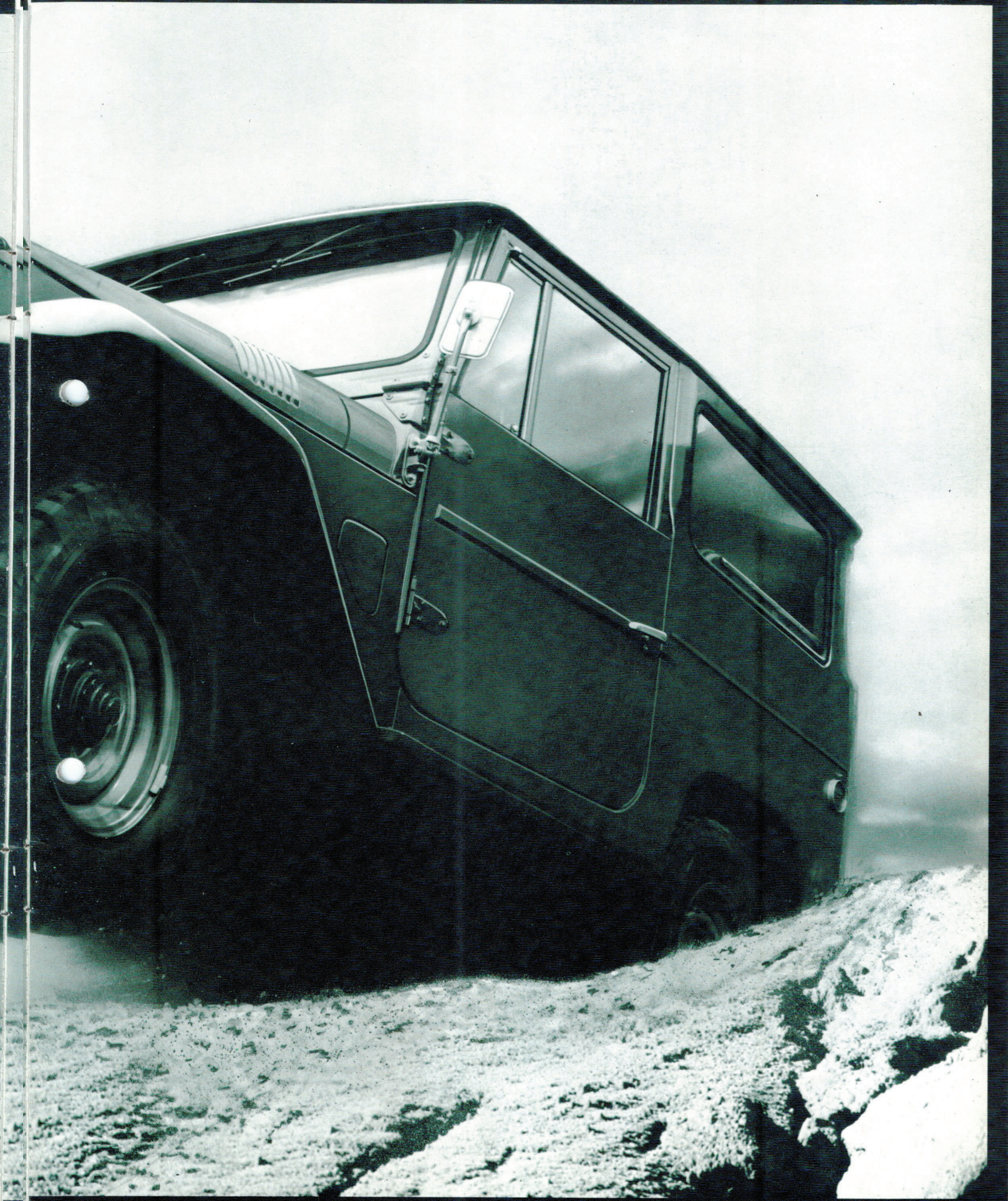
It will easily climb 71 per cent grades, yet on the highway it cruises along at 130 km/h. (80 mph).

TERRAIN.

In addition, the tank-tough body and under-body, sturdy fenders and bumpers, husky chassis and heavy-duty axles have given the TOYOTA

LAND CRUISER 4-wheel drive

the world's highest reputation as a four-wheel drive vehicle.



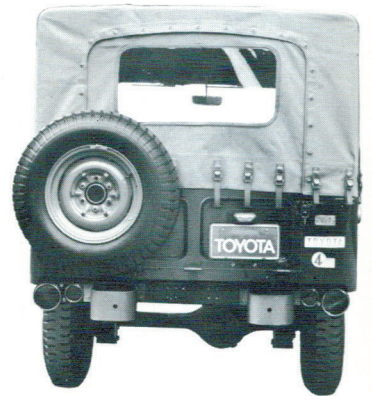
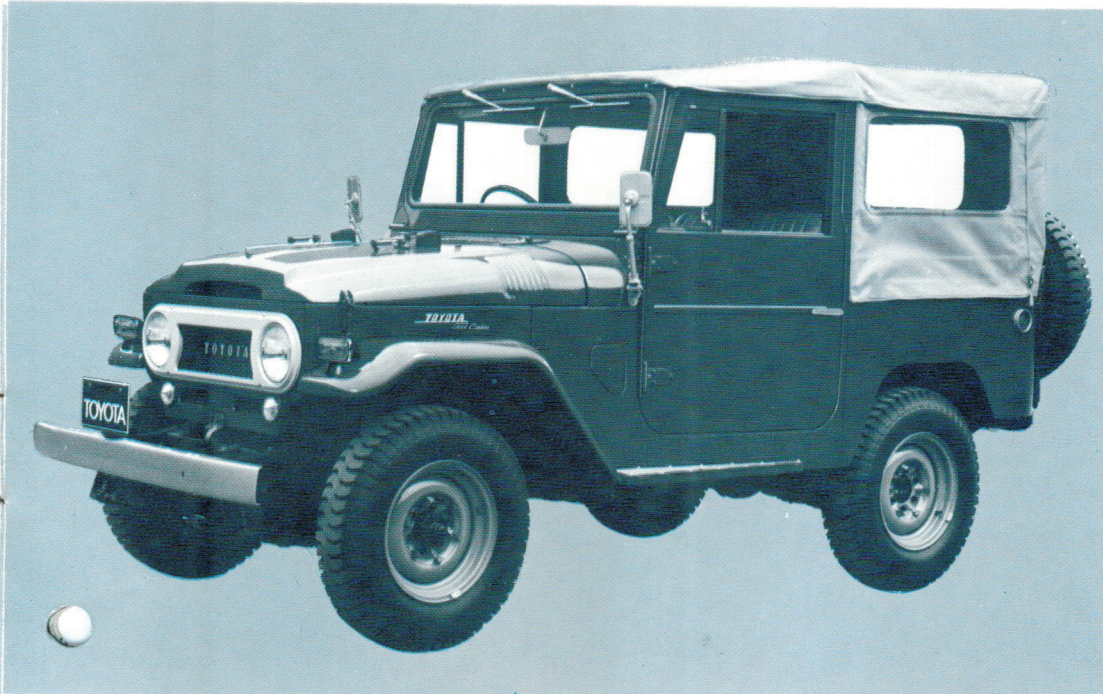
Hard Top

- Powered by husky six-cylinder 145 B.H.P. engine.
- Designed for easy operation.
- 3 speed floor or steering column shift type transmission available.
- Comfortable vinyl upholstered seats for seven passengers.
- Hard top that can be removed.
- Large rear gate that makes loading and unloading easy.
- Windshield that can be tilted down flat.

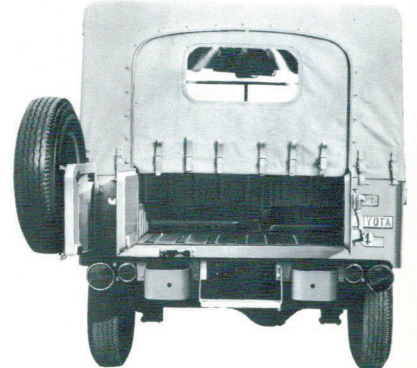


Canvas Top, Vinyl Top

- Powered by husky six-cylinder 145 B.H.P. engine.
- Designed for easy operation.
- 3 speed floor or steering column shift type transmission available.
- Canvas or vinyl top that can be easily removed.
- Windshield that can be tilted down flat.
- Comfortable vinyl upholstered seats for seven passengers.



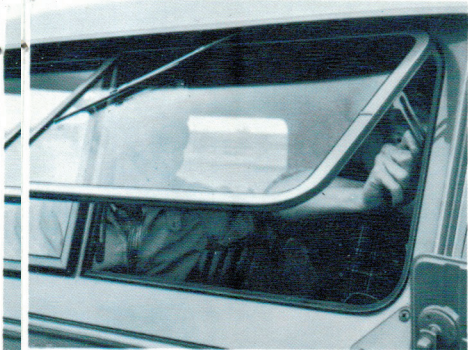
Roll-up type rear curtain combined with a drop-gate. (Basic Type)



Roll-up type rear curtain plus center swing-out gates. (Type B)



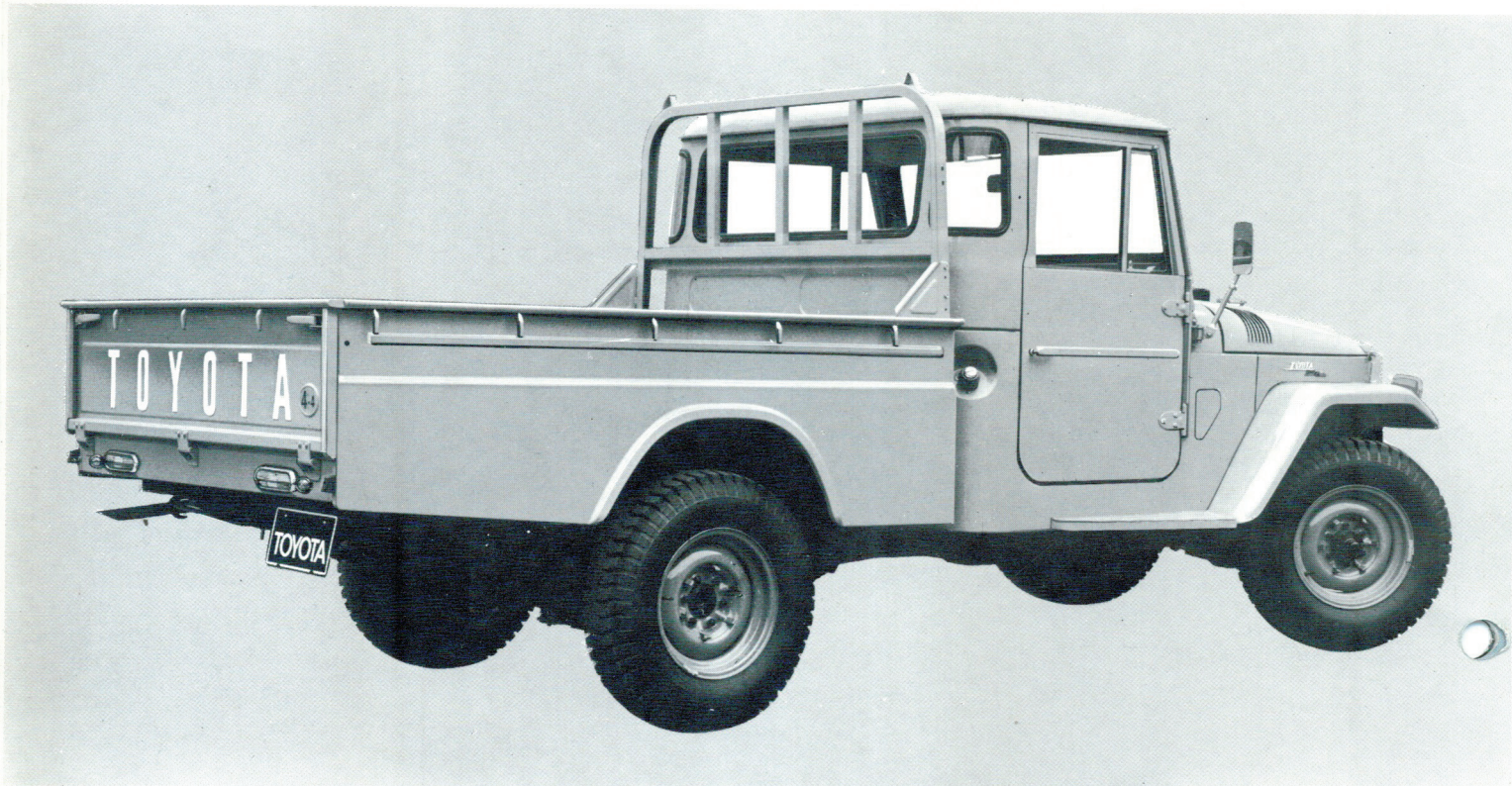
Canvas and steel gates swing out at the center. (Type C)



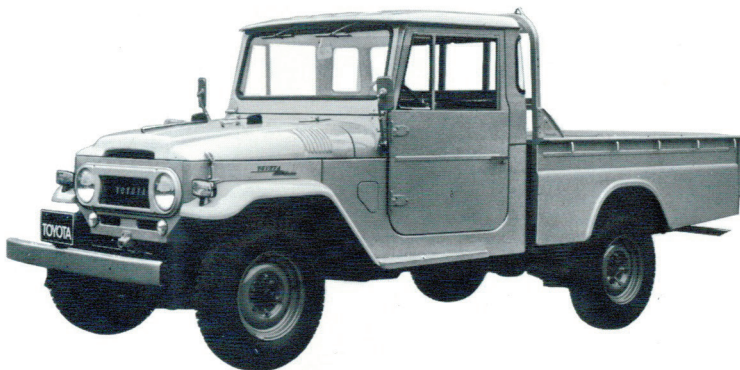
PUSH-TO-OPEN TYPE WINDSHIELD
This top-hinged windshield can be opened from the bottom. (optional)

Pickup

- Powered by husky six-cylinder 145 B.H.P. engine. ●Designed for easy operation.
- 3 speed floor or steering column shift type transmission available.
- Cab (top and doors) and rear guard frame are detachable. ●Cargo floor made to withstand hard usage.
- Dimensions of cargo deck interior: Length, 2,135 mm (84.1 in.) Width, 1,590 mm (62.6 in.) Height, 415 mm (16.3 in.)

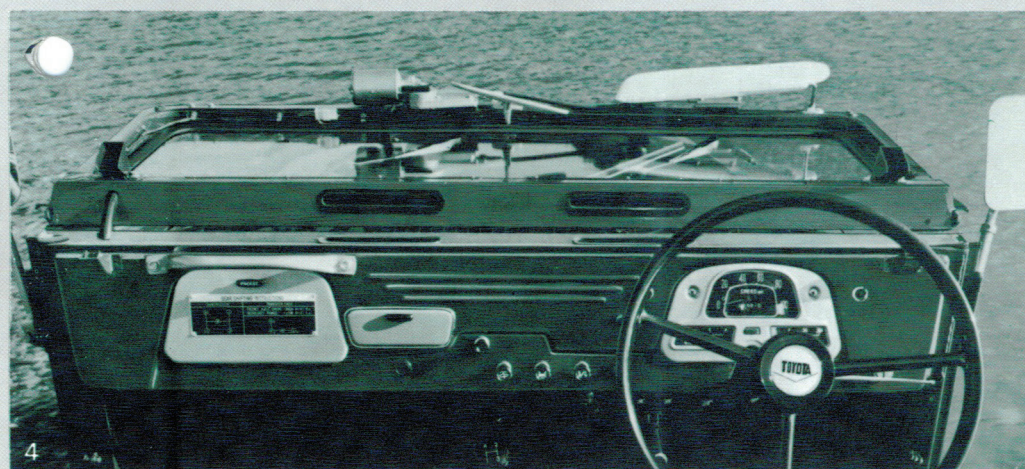
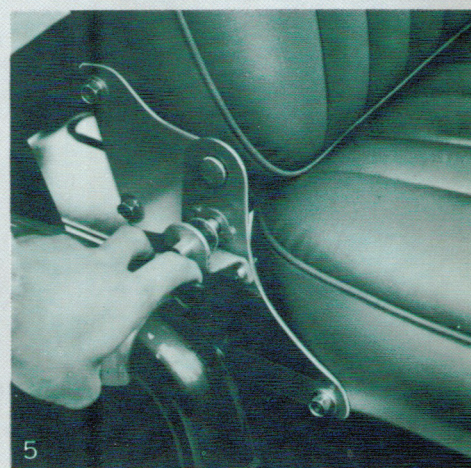
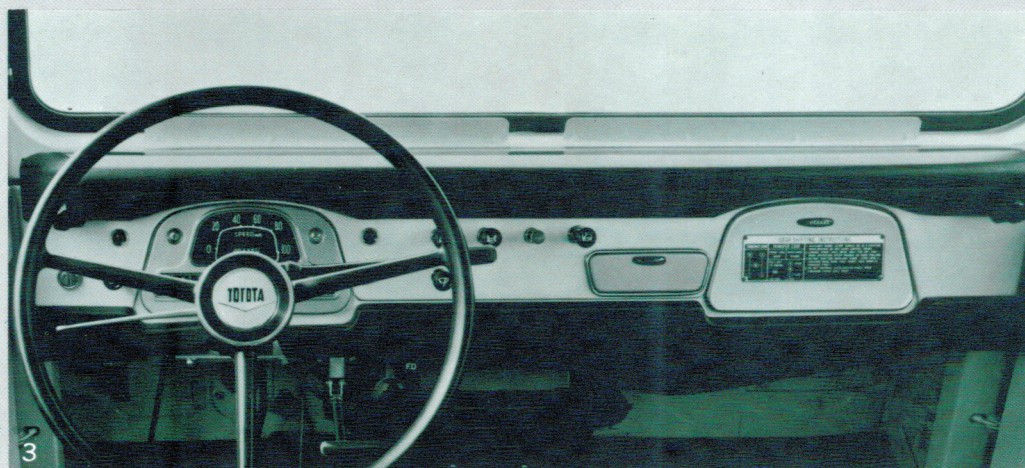


Top, doors and rear guard frame can be removed and replaced easily by anyone.



INTERIOR FEATURES

HARD TOP, CANVAS TOP AND VINYL TOP



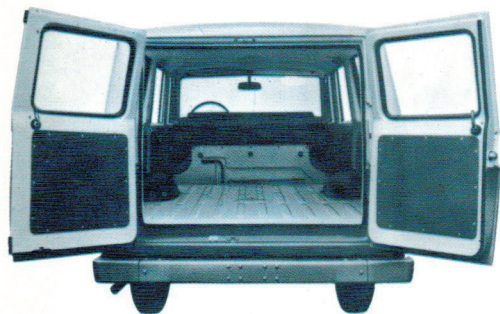
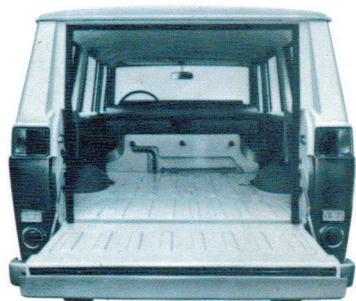
1. Seats covered with handsome vinyl leatherette. The transmission shift lever is mounted on the steering column. The transfer-case shift lever and the four-wheel drive operating lever are located under the dashboard on left-hand drive models and are attached to the dashboard on right-hand drive

models.
2. On the model with floor mounted shift, the four-wheel drive lever is also mounted on the floor.
3. The dashboard is designed for ease of operation. All control buttons have picture-symbol identification.
4. The dashboard of the right-hand

drive model.
5. The front seat backs can be locked upright for safety.
6. By turning the windshield frame catches, the windshields on the canvas top and the vinyl top models can be tilted down flat.

Station Wagon

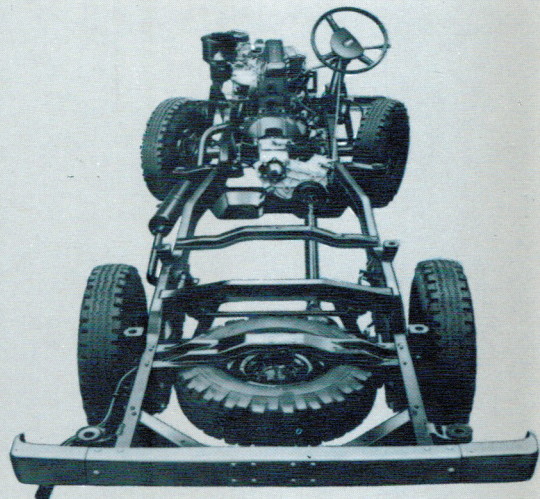
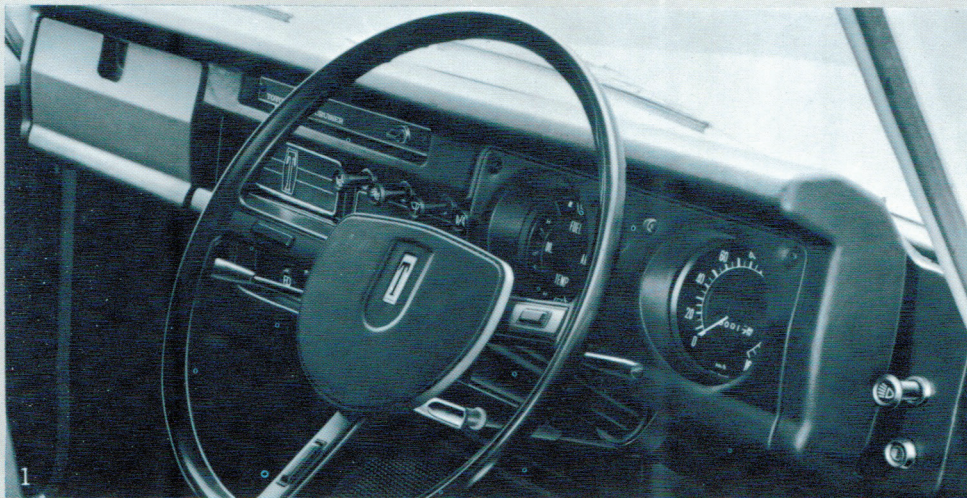
- New interior combines luxury with complete safety.
- Cargo area has all the space needed for family hauling.
- Powered by husky six-cylinder 145 B.H.P. engine.
- 3 speed floor or steering column shift type transmission available. Also 4 speed floor shift available as option.
- Completely flat floor and wide opening tailgate or rear doors for easier loading and unloading.
- Power operated rear window can be opened and closed from control on the dashboard. (Drop-down rear gate model only)



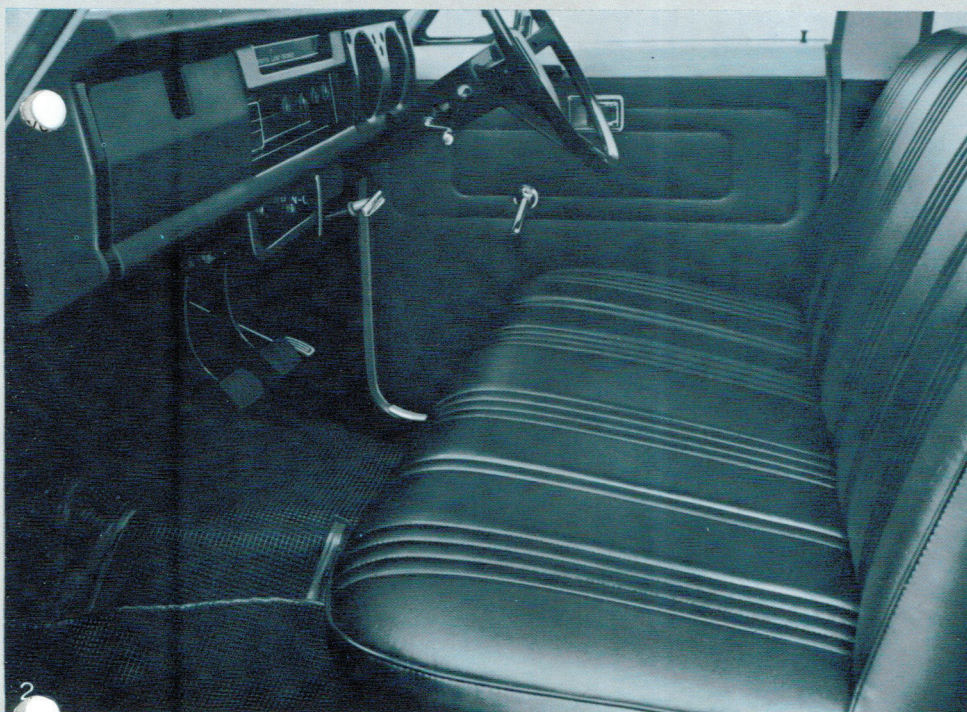
Flat floor in cargo room provides more space utility. Two types of rear door opening available—drop-down or swing-out type. Power rear window is standard equipment on drop-down type model.



STATION WAGON INTERIOR AND CHASSIS FEATURES



The durable straight-line propeller shaft stands up to long periods of high-speed driving.

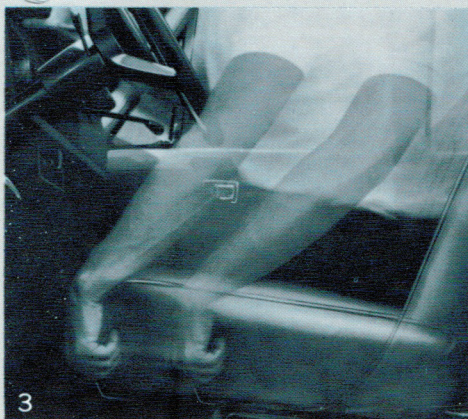


1. Full instrumentation combines ease of operation with complete safety: glare-proof padded dashboard, easy-to-read, large dial-type gauges, control buttons with picture-symbol identification, padded steering wheel hub. Radio and heater available as options.

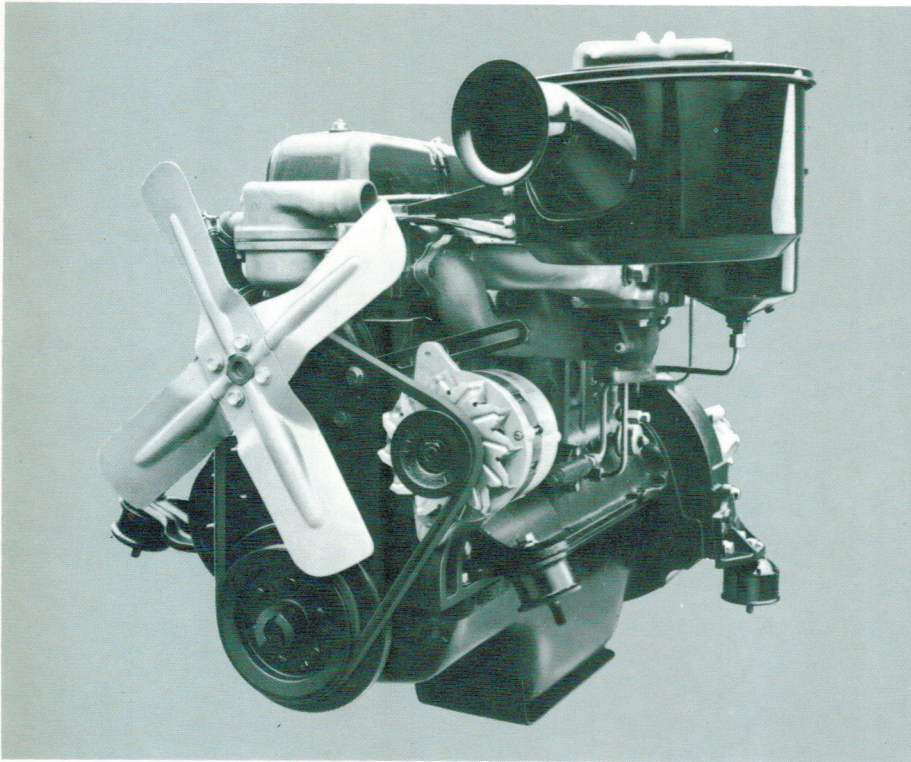
2. Front and rear seats are handsomely tailored in vinyl—complete with seat-belt anchorages. Floor mats are standard equipment.

3. Front seat is adjustable 140 mm. (5.5 in.) fore and aft.

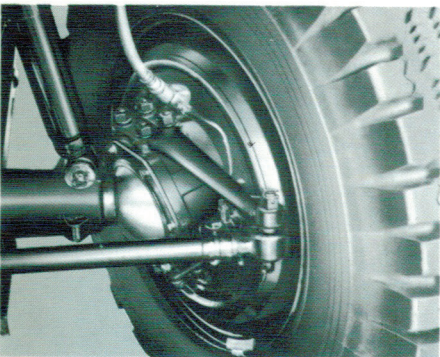
4. Dashboard controlled raising and lowering system for rear window is offered at no extra cost. (On drop-down tailgate model only)



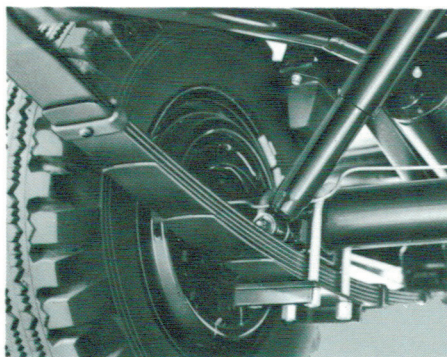
MECHANICAL FEATURES



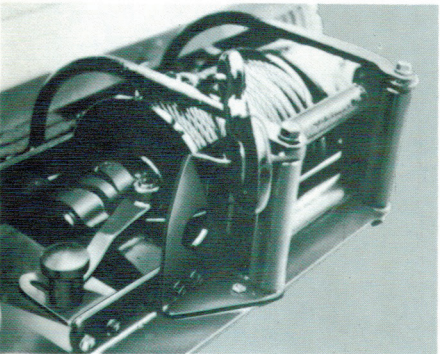
All models of the TOYOTA 4-Wheel Drive LAND CRUISER feature a husky 6-cylinder OHV 3,878cc. (236.7 cu.in.) engine. It develops 145 B.H.P. at 4,000 rpm. High output at low revs means smoothness and longer life.



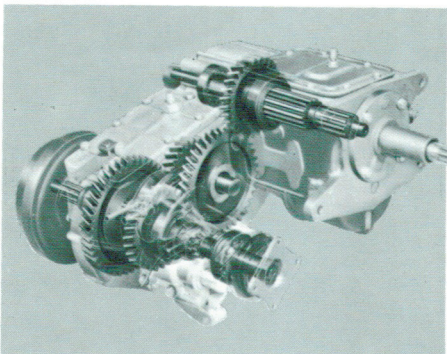
Front-wheel drive and steering components are rugged, heavy duty. Leaf spring and shock absorber combination assures comfortable ride.



Rear axle is durable, semi-floating type. Leaf springs, shocks and anti-roll bar ensure a safe, comfortable ride over any surface.

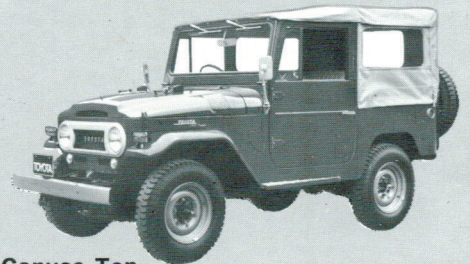


For any pulling or lifting operations, your TOYOTA LAND CRUISER can be equipped with a powerful winch as optional equipment.

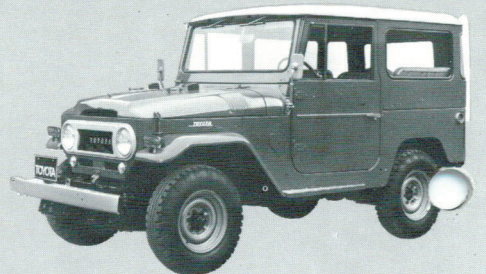


2-speed transfer-case, combined with 3-speed gearbox, provides 6 different speed ratios which will take the LAND CRUISER through any terrain.

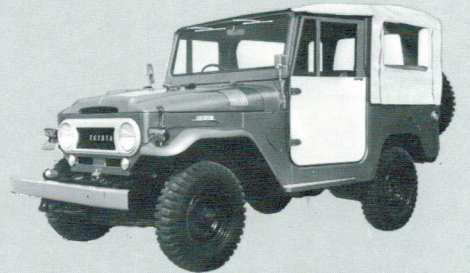
TOYOTA LAND CRUISERS FOR VARIOUS PURPOSES



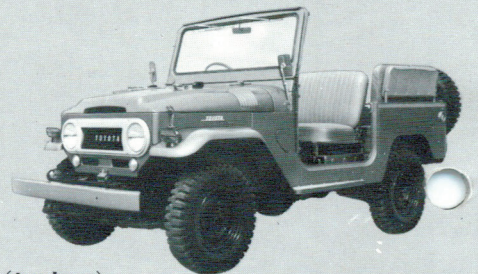
Canvas Top



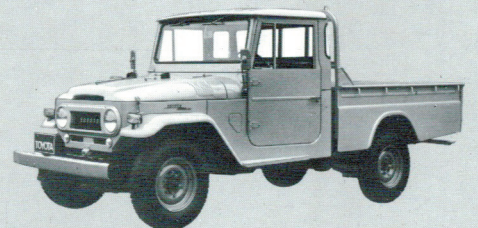
Hard Top



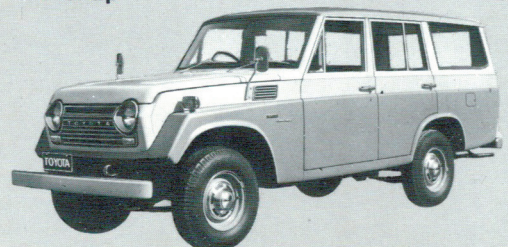
Vinyl Top



(topless)

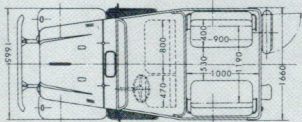
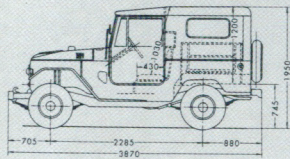


Pickup

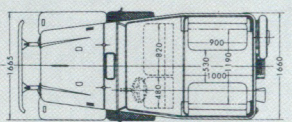
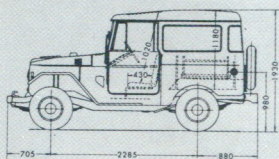


Station Wagon

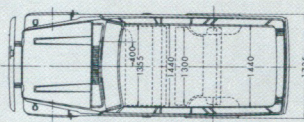
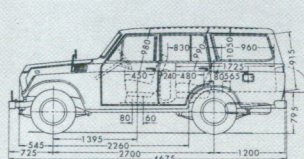
Canvas Top



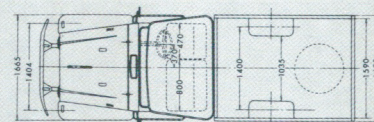
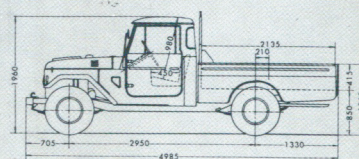
Hard Top



Station Wagon



Pickup



Models		Canvas Top Vinyl Top (FJ40)	Hard Top (FJ40V)	Canvas Top (FJ43)	Pickup (FJ45P-B)	Station Wagon (FJ55V)
Wheelbase	mm (in.)	2,285 (90.0)		2,430 (95.7)	2,950 (116.1)	2,700 (106.3)
Tread,	front	1,404 (55.3)		1,404 (55.3)	1,404 (55.3)	1,405 (55.3)
	rear	1,400 (55.1)		1,400 (55.1)	1,400 (55.1)	1,400 (55.1)
Overall,	length	3,870 (152.4)		4,230 (166.5)	4,985 (196.3)	4,675 (184.1)
	width	1,665 (65.6)		1,665 (65.6)	1,690 (66.5)	1,735 (68.3)
	height	1,950 (76.8)	1,930 (76.0)	1,970 (77.6)	1,960 (77.2)	1,865 (73.4)
Ground clearance	mm (in.)	200 (7.9)		210 (8.3)	230 (9.1)	210 (8.3)
Net vehicle weight	kg. (lb.)	1,480 (3,265)	1,575 (3,470)	1,590 (3,505)	1,720 (3,790)	1,810 (3,990)
Gross vehicle weight	kg. (lb.)	2,050 (4,520)	2,050 (4,520)	2,300 (5,070)	2,900 (6,395)	2,600 (5,730)
Tire size (standard)	front	7.10-15, 4 P.R.		7.60-15, 4 P.R.	7.00-16, 6 P.R.	7.00-15, 6 P.R.
	rear	7.10-15, 4 P.R.		7.60-15, 6 P.R.	7.00-16, 8 P.R.	7.00-15, 6 P.R.
Turning circle	m (ft.)	10.6 (34.8)		11.0 (36.1)	13.2 (43.3)	12.4 (40.7)

*The right is reserved to alter prices and any details of specification and equipment without notice. Details of specification and equipment are subject to change to suit local conditions and requirement.

SPECIFICATIONS

ENGINE: Type—6-cylinder in line; Bore & stroke—90×101.6 mm (3.54×4.00 in.); Piston displacement—3,878 cc (236.7 cubic in.); Compression ratio—7.8:1; Max. horsepower—(SAE) 145 HP @ 4,000 rpm; Max. torque—(SAE) 30 m-kg (217 ft.-lb.) @ 2,000 rpm; Carburettor—Down draft, single barrel; Fuel tank capacity—70 litres (18.5 US gal.), Station Wagon—90 litres (23.8 US gal.); Cooling system—Forced circulation by centrifugal pump; Lubrication system—Forced lubrication by gear pump; Engine oil capacity—8.5 litres (9.0 US qts.);

Battery—12 volts 50 amp. hr.; Alternator—12 volts 480 watts.

CLUTCH: Type—Dry single plate with torsion rubbers; Facing diameter—275 mm (10.8 in.); Facing area—716 cm² (111.0 sq.in.); **GEARBOX:** Type—3-speed, 2nd & 3rd gears synchromesh; Gear ratio—First: 2.76, Second: 1.70, Third: 1.00, Reverse: 3.67. **TRANSFER:** Type—2-speed, helical gear sliding type; Gear ratio—Low: 2.31, High: 1.00. **FRONT AXLE:** Type—Full-floating, hypoid gear drive; Ratio—3.70 (4.11 for FJ45P-B). **REAR AXLE:** Type—Semi-floating, hypoid gear drive; Ratio—3.70 (4.11 for

FJ45P-B). **SUSPENSION:** Front—Semi-elliptic leaf springs and double-acting hydraulic shock absorbers; Rear—Semi-elliptic leaf springs and double-acting hydraulic shock absorbers. (Torsion stabilizer on Models FJ43 and FJ45P-B only) **STEERING:** Type—Worm and sector roller; Gear ratio—21 to 1. **BRAKE:** Service brake—Hydraulic brake operating on all wheels; Drum diameter—290 mm (11.4 in.); Lining area—1,180 cm² (182.9 sq. in.); Parking brake—Mechanical brake operating on propeller shaft.

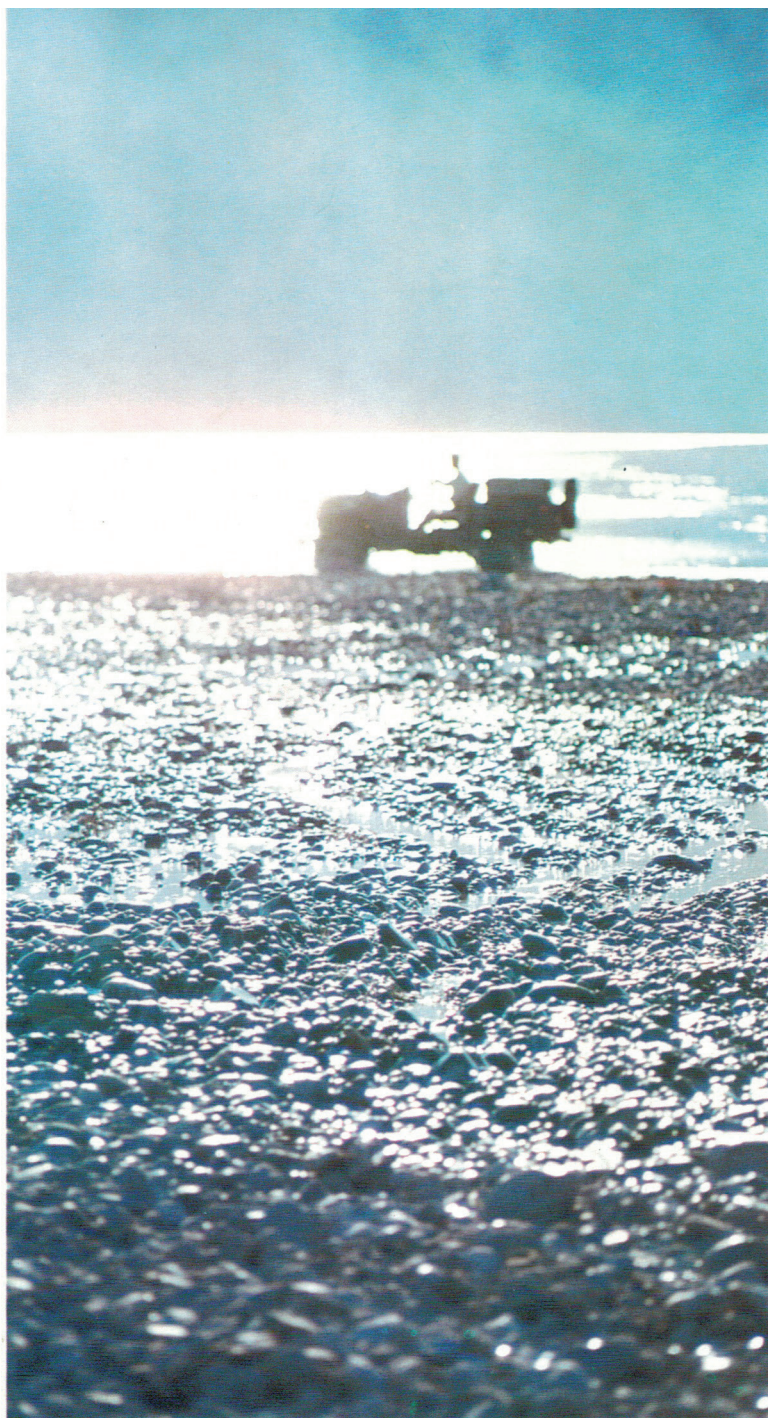
MAJOR ITEMS OF OPTIONAL EQUIPMENT

Differential w/Gear Ratio 4.11 (Std. on FJ45P-B)
Birfield Type Constant Velocity Joint
3-speed Floor Shift Type Gearbox
Front-mounted Winch
Cigarette Lighter
Car Heater & Defroster
Car Radio & Antenna/Short Wave Adapter
Windshield Washer
Alternator 480W (low rev. charging) or

660W
Hi-power Battery (12 V., 70 amp. hr.)
Fog Lamps
Safety Straps (Except FJ55V)
Seat Belts
Seat Adjuster (Std. on FJ55VFJ45P-V)
Starting Handle (Not available w/Front Winch, Std. on FJ55V)
Steel Doors (for Canvas Door Model)
Wheel Caps (Std. on FJ55V)
Pintle Hook (Except FJ45P-BFJ55V)

Trailer Socket (Except FJ45P-BFJ55V)
Floor Mat (Std. on FJ55V)
Fuel Tank Lock (Std. on FJ55V)
Spare Fuel Tank
Inlet Fuel Strainer
*4-speed Floor Shift Type Gearbox (Full Synchro.) w/Single Speed Transfer
*Brake Booster *Arm Rest
*Foamed Vinyl Leatherette Bench Seat
*Luggage Compartment Floor Mat (*Optional on FJ55V only)

Optional Extras also include: variations in Tire Size and Pattern; Type of Canvas Top rear door; Additional parallel or transverse type rear seat; Body undercoating; Vinylcloth Top (for FJ40); Semi-Stake and Canvas Hood on Deck (for FJ45P-B). Alternative equipment at no extra cost on all models includes; Right- or Left-hand-steering; m.p.h. or km.p.h. speedometer; Exterior color assortment in 10 different colors.



TOYOTA LAND CRUISER

Importeur voor Nederland

LOUWMAN & PARQUI

Veursestraatweg 280 - Tel. 01761-6911

LEIDSCHENDAM

TOYOTA 

TOYOTA MOTOR CO., LTD. TOYOTA MOTOR SALES CO., LTD./FJ/E • 47/PRINTED IN JAPAN/NO. 77913