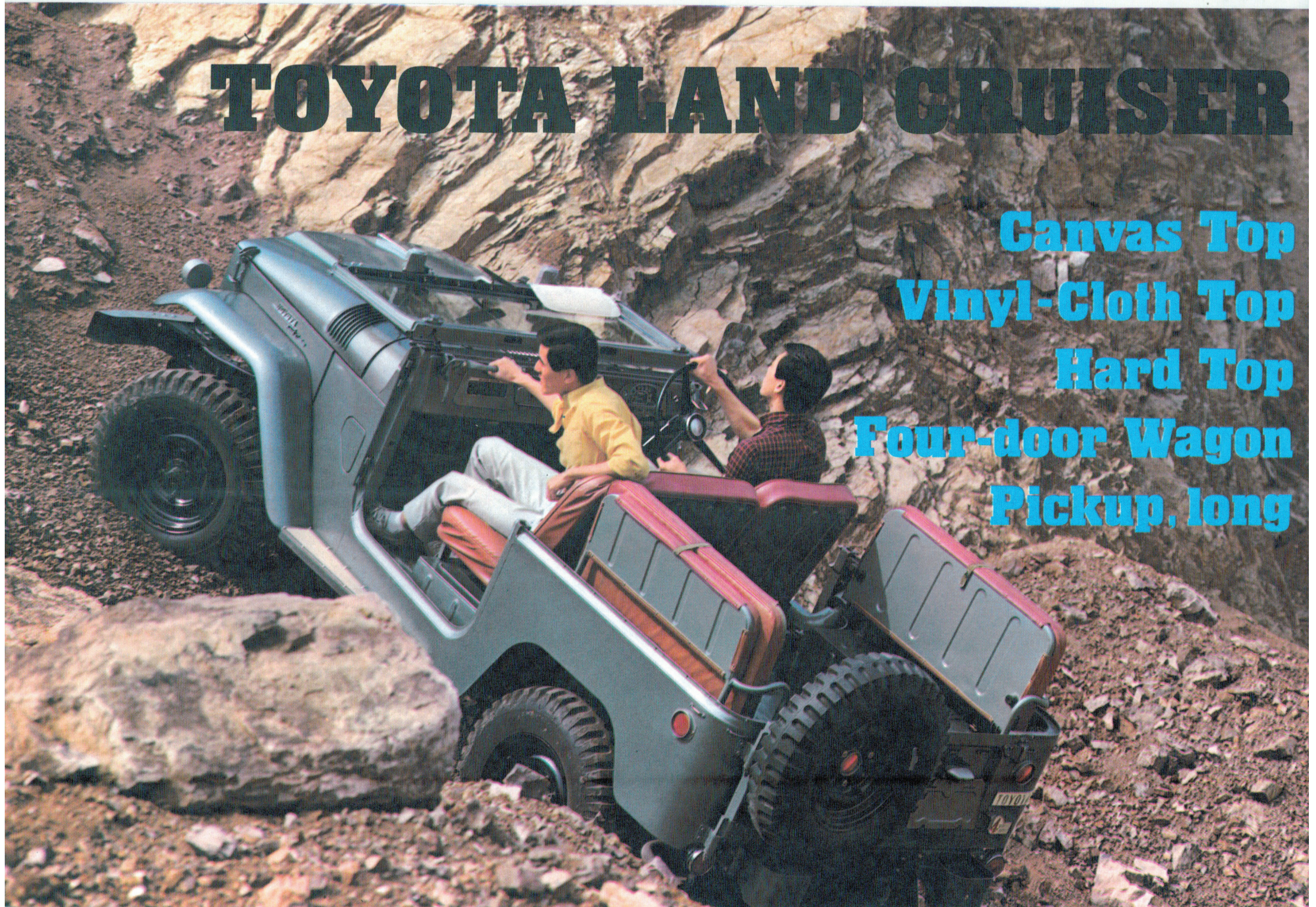


TOYOTA LAND CRUISER

Canvas Top
Vinyl-Cloth Top
Hard Top
Four-door Wagon
Pickup, long



TOYOTA LAND CRUISER

**TOUGH ONES
COME FROM TOYOTA**

1 MULTI-PURPOSE

ideal, whether for work or pleasure

2 POWER

6-cylinder, untiring 135 b.h.p. engine

3 VERSATILITY

4-wheel-drive vehicle with varying gear combinations

4 RUGGEDNESS

heavy-duty, sturdy TOYOTA construction

5 COMFORT

carries men and cargo in its roomy space

6 VARIETY

various models with optional equipment to choose from





TOYOTA LAND CRUISERS FOR VARIOUS PURPOSES



(topless)



Four-door Wagon



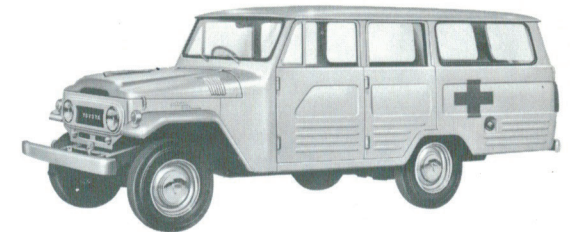
Hard Top



Pickup, long



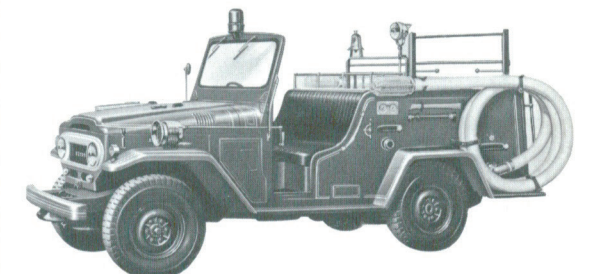
Canvas Top



Ambulance



Vinyl-Cloth Top



Fire fighting



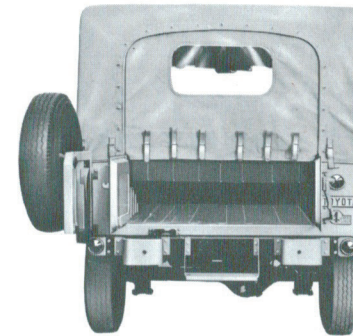
Canvas Top



Canvas and steel gates swinging out at the center



Roll-up type rear curtain together with a drop-gate



Roll-up type rear curtain plus center swing-out gates



PUSH-AND-OPEN TYPE WINDSHIELD
A top-hinged windshield that may be opened from the bottom is available as an optional item. (optional extra)

Canvas Top Vinyl-Cloth Top

Equipped with a fatigueless 135 b.h.p. six cylinder engine and 3-speed gear box, 2-speed transfer case combination, the versatile Toyota Land Cruiser enables selection of any gear combination to meet the worst road conditions.

Toyota offers the Land Cruiser in six versions. Two models shown here—Canvas Top and Vinyl-cloth Top—boast economical and weathertight properties.

Three types of rear openings are available.



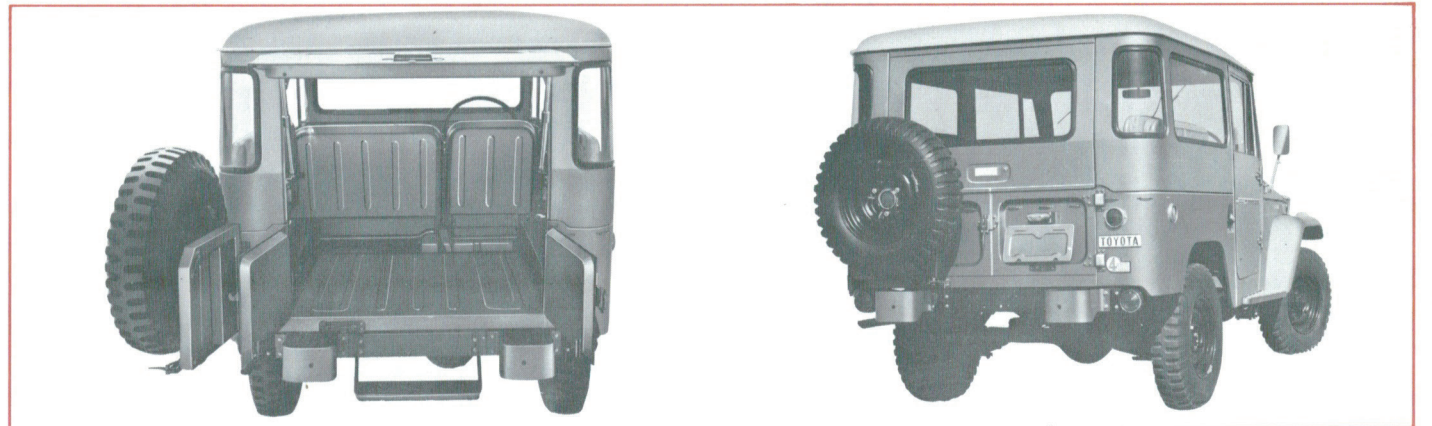
Vinyl-Cloth Top



Hard Top

Here is the world's toughest multi-purpose vehicle, specifically designed to perform any heavy-duty task with the maximum in handling ease—TOYOTA LAND CRUISER!

The Hard Top has the strength and ruggedness to match the Land Cruiser's power. With its all steel, weatherproof construction, it provides limousine comfort on the trail. Outstandingly high visibility is another feature of the Hard Top.



Combination of an upper gate, hinged at the top, and lower swing-out gates makes a unique rear opening system. This opening ensures quick and easy access to the rear seats or cargo area.

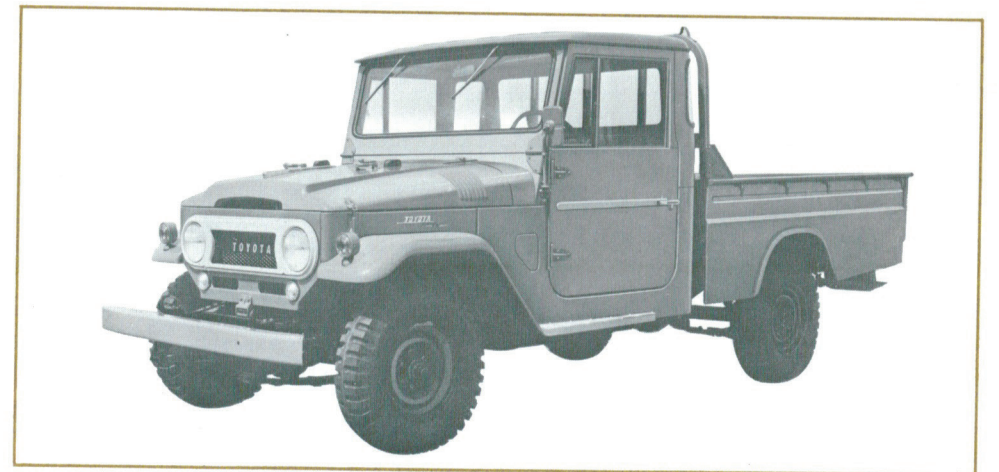
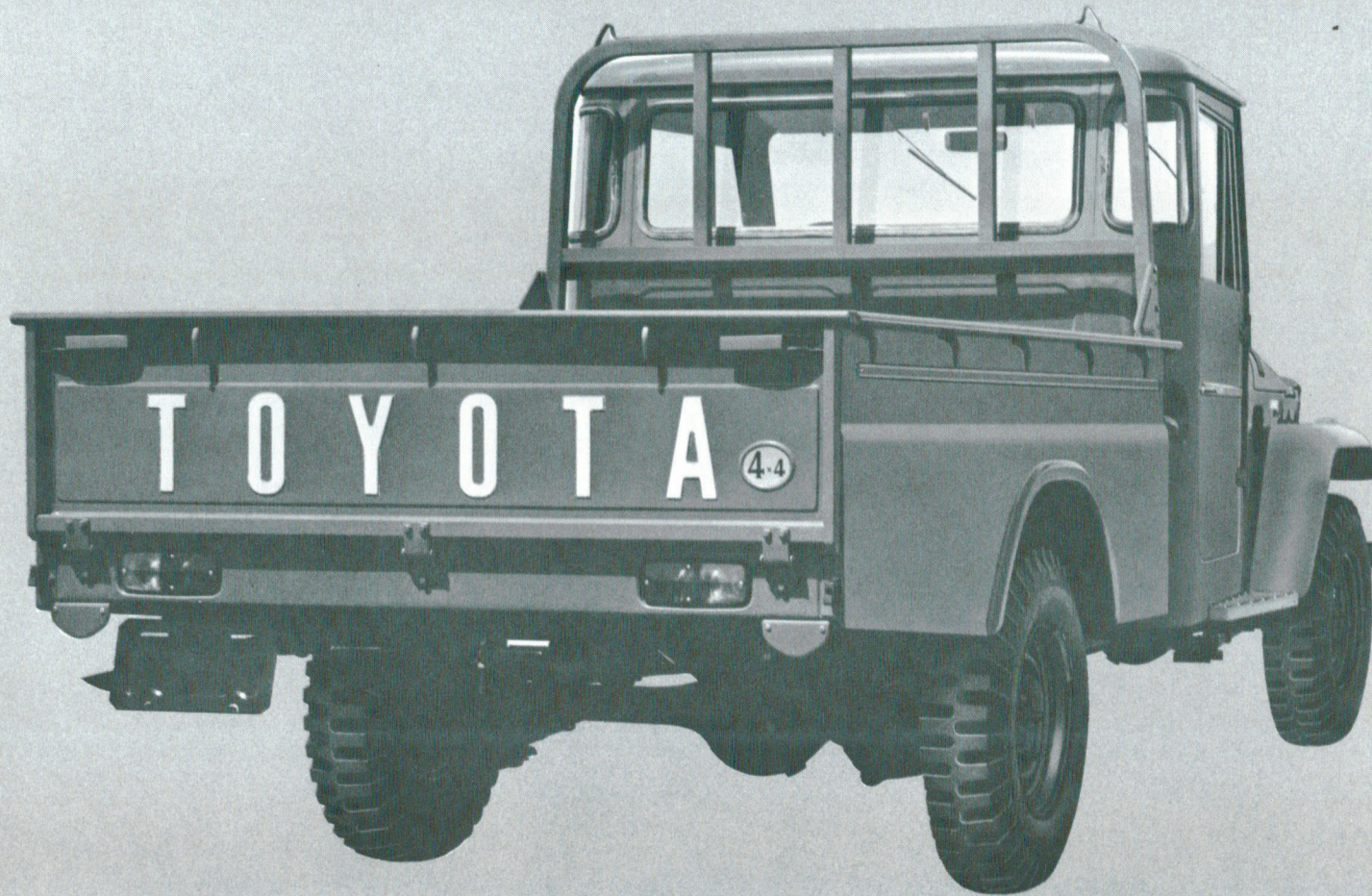
Pickup, long

The Land Cruiser's 9-inch ground clearance makes the roughest terrain easy to negotiate without scraping bottom. Exceptionally small turning radius is another factor to let the Land Cruiser go anywhere.

No other pickup carries so much, goes so far, like this four-wheel-drive Toyota with the removable top. The flat tailgate allows extending loads beyond the deck.

Dimensions of cargo deck

Length, interior	2,135 mm (84.1 in.)
Width, interior	1,590 mm (62.6 in.)
Height, interior	415 mm (16.3 in.)





Two full swing-out doors which close at the center facilitates access of personnel and make loading easier.



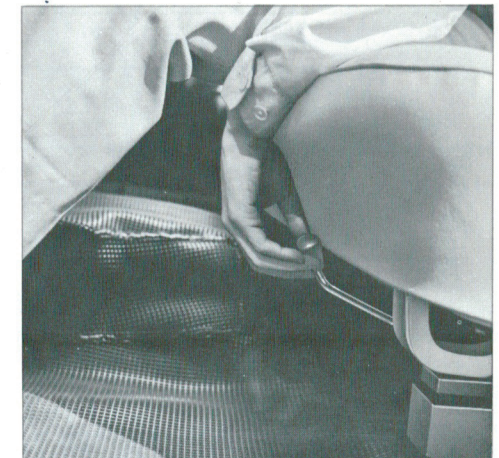
With the lift gate up and tail gate dropped level with the floor, additional cargo area is provided.

Four-door Wagon

Hauling a tough load on a rugged road? The Land Cruiser triumphs over exceptionally steep grade, fords rivers, conquers sandy, muddy or snowy terrain.

The return trip is a snap since in regular highway traffic the Land Cruiser's top speed makes it the world's fastest auto in its class.

This all steel wagon combines the performance of the Land Cruiser with the luxuries of a sedan. The folding rear seat enables enlargement of the cargo space.



With the seat adjuster, the driver's seat can be slid forward or backward.



Pickup, long

The Land Cruiser's 9-inch ground clearance makes the roughest terrain easy to negotiate without scraping bottom. Exceptionally small turning radius is another factor to let the Land Cruiser go anywhere.

No other pickup carries so much, goes so far, like this four-wheel-drive Toyota with the removable top. The flat tailgate allows extending loads beyond the deck.

Dimensions of cargo deck	
Length, interior	2,135 mm (84.1 in.)
Width, interior	1,590 mm (62.6 in.)
Height, interior	415 mm (16.3 in.)



MAJOR ITEMS OF OPTIONAL EQUIPMENTS

SPECIFICATIONS

Alternator 420W (Standard; 360W)

Power Take-off

Front-mounted Winch

Oil Bath Type Air Cleaner

Direct Control Type Gearbox

Differential Gear Ratio 4.11
(Standard for FJ45P-B)

Starting handle*

Cigar Lighter

Car Radio & Antenna

Short Wave Adapter

Car Heater & Defroster**

Windshield Washer**

Fog Lamps

Steel Doors (for FJ40, FJ43)

Wheel Caps

Sun Visors (Standard for FJ45V, FJ45P-B)

Safety Strap (Except FJ45V)

Seat Belts

Floor Mat (Standard for FJ45V, FJ45P-B)

Pintle Hook***

Trailer Socket***

Fuel Tank Lock (Standard for FJ45V)

Spare Fuel Tank (Jerry Can)

Fuel Strainer

* Not available with Front Winch.

** Available only on Left-hand steering models.

*** Not available on FJ45V equipped with drop type rear doors.

Optional Extras also include: variations in Tire Size and Pattern; Type of Canvas Top rear door; Additional parallel or transverse type rear seat; Body undercoating (standard for FJ45V); Vinyl-cloth Top (for FJ40); Semi-Stake and Canvas Hood on Deck (for FJ45P-B). Full details can be obtained from your Dealer.

Alternative equipment at no extra cost on all models includes: Right- or Left-hand-steering; m.p.h. or km.p.h. speedometer; Exterior color assortment in 13 different colors.

ENGINE

Type	6-cylinder in line
Bore & stroke	90×101.6 mm (3.54×4.00 in.)
Piston displacement	3.878 cc (236.7 cubic in.)
Compression ratio	7.7
Max. horsepower	(SAE) 135 HP @ 3,800 rpm
Max. torque	(SAE) 30 m·kg (217 ft.-lb.) @ 2,000 rpm
Carburetor	Down draft, single barrel
Fuel tank capacity	70 liters (18.5 US gal.)
Cooling system	Forced circulation by centrifugal pump
Lubrication system	Forced lubrication by gear pump
Engine oil capacity	6.5 liters (6.9 US gts.)
Battery	12 volts 50 amp. hr.
Alternator	12 volts 360 watts

CLUTCH

Type	Dry single plate with torsion rubbers
Facing diameter	275 mm (10.8 in.)
Facing area	715 cm ² (111 sq.-in.)

GEAR BOX

Type	3-speed, 2nd & 3rd gears synchromesh
Gear ratio	First: 2.76 Second: 1.70 Third: 1.00 Reverse: 3.67

TRANSFER

Type	2-speed helical gear sliding type
Gear ratio	Low: 2.31 High: 1.00

FRONT AXLE

Type	Full-floating, hypoid gear drive
Capacity	900 kg (2,000 lb.) *1,150 kg (2,500 lb.) for FJ45P-B
Ratio	3.70 *4.11 for FJ45P-B

REAR AXLE

Type	Semi-floating, hypoid gear drive
Capacity	2,300 kg (5,000 lb.)
Ratio	3.70 *4.11 for FJ45P-B

SUSPENSION

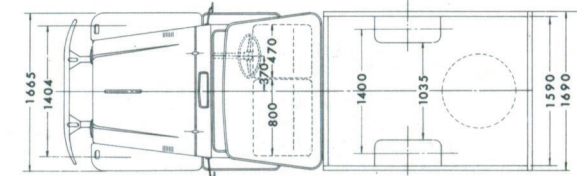
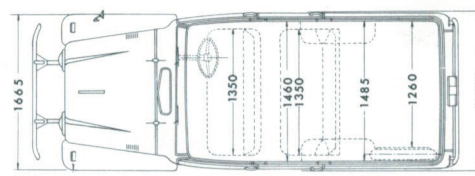
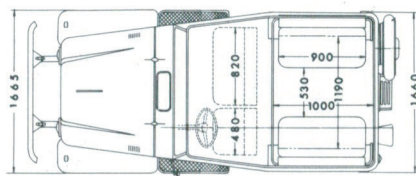
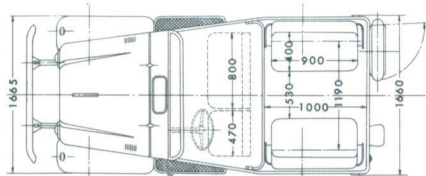
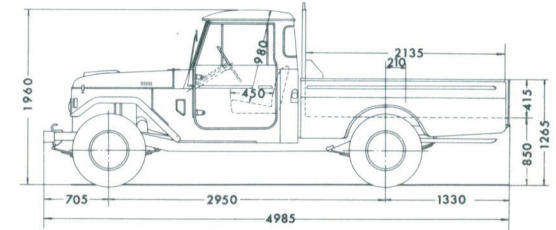
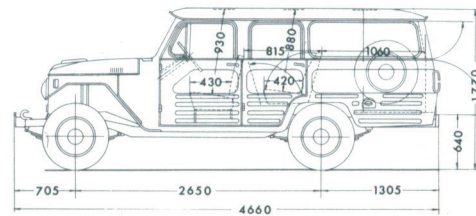
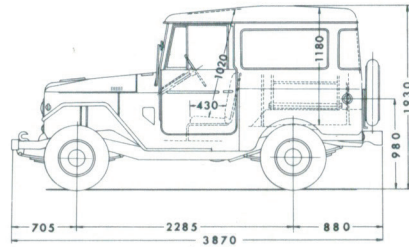
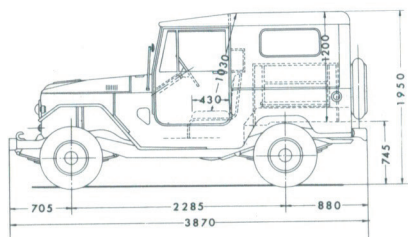
Front	Semi-elliptic leaf springs and double-acting hydraulic shock absorbers.
Rear	Semi-elliptic leaf springs and double-acting hydraulic shock absorbers. Torsion stabilizer on Models FJ43, FJ45V and FJ45P-B

STEERING

Type	Worm and sector roller
Gear ratio	21 to 1

BRAKE

Service brake	Hydraulic brake operating on all wheels
Drum diameter	290 mm (11.4 in.)
Lining area	1,180 sq. cm (183 sq. in.)
Parking brake	Mechanical brake operating on propeller shaft



Canvas Top (FJ40)

Hard Top (FJ40V)

Four-door Wagon (FJ45V)

Pickup, long (FJ45P-B)

Models		Canvas Top Vinyl-Cloth Top (FJ40)	Hard Top (FJ40V)	Canvas Top (FJ43)	Four-door Wagon (FJ45V)	Pickup, long (FJ45P-B)
Wheelbase	mm (in.)	2,285 (90.0)		2,430 (95.7)	2,650 (104.3)	2,950 (116.1)
Tread, front rear	mm (in.)	1,404 (55.3)		1,404 (55.3)	1,404 (55.3)	1,404 (55.3)
	mm (in.)	1,400 (55.1)		1,400 (55.1)	1,400 (55.1)	1,400 (55.1)
Overall, length width	mm (in.)	3,870 (152.4)		4,230 (166.5)	4,660 (183.5)	4,985 (196.3)
	mm (in.)	1,665 (65.6)		1,665 (65.6)	1,720 (67.7)	1,690 (66.5)
height	mm (in.)	1,950 (76.8)	1,930 (76.0)	1,970 (77.6)	1,770 (69.7)	1,960 (77.2)
Ground clearance	mm (in.)	200 (7.9)		210 (8.3)	220 (8.7)	230 (9.1)
Net vehicle weight	kg. (lb.)	1,480 (3,265)	1,575 (3,470)	1,590 (3,505)	1,850 (4,080)	1,720 (3,790)
Gross vehicle weight	kg. (lb.)	2,050 (4,500)	2,050 (4,500)	2,300 (5,000)	2,700 (6,000)	2,900 (6,400)
Tire size (standard)	front	7.10-15, 4 P.R.		7.60-15, 4 P.R.	7.00-15, 6 P.R.	7.00-16, 6 P.R.
	rear	7.10-15, 4 P.R.		7.60-15, 6 P.R.	7.00-15, 8 P.R.	7.00-16, 8 P.R.
Turning circle	m (ft.)	10.6 (34.8)		11.0 (36)	12.4 (40.8)	13.2 (43.3)

*The right is reserved to alter prices and any details of specification and equipment without notice. Details of specification and equipment are subject to change to suit local conditions and requirement.

TOYOTA MOTOR CO., LTD.
TOYOTA MOTOR SALES CO., LTD.

Importeur voor Nederland
LOUWMAN & PARQUI
Veursestraatweg 280 - Tel. 01761-5151 (7 lijnen)
LEIDSCHENDAM

Autobedrijf P. G. BEUKERS & ZN.
TOYOTA - DEALER
Sand-Ambachtstraat 75-79
's-CRAVENZANDE Tel. 01748-2492